

AIRLITE POWERCHAIR



TopGun
Mobility

Mobility & Homecare Specialists

USER MANUAL

INTRODUCTION	1
SAFETY NOTICE	2
UNPACKING INSPECTION	2
EXPLANATION OF SYMBOLS	2
SAFETY INSTRUCTIONS	2
GENERAL SAFETY	2
ELECTROMAGNETIC COMPATIBILITY (EMC)	3
FEATURES AND SPECIFICATIONS	5
PRODUCT FEATURES	5
CIRCUIT DIAGRAM	2
SPECIFICATIONS	2
ASSEMBLY AND DISASSEMBLY	4
CONTROLLER INSTALLATION REMOVAL	4
BRAKE	4
ASSEMBLY OF BATTERY BOX	5
REMOVAL AND REPLACEMENT	5
BATTERY TOGGLE SWITCH	5
SEAT BELT REMOVAL & INSTALLATION	6
ANTI-TIP WHEEL	7
ARMREST LIFTING	7
FOLDING/UNFOLDING	7
FOOTREST	8
PORTABILITY	9
OPERATION	10
JOYSTICK CONTROLLER	10
BEFORE SITTING	10
STARTING	10
STEERING	10
DRIVING ON INCLINES	11
BATTERY AND CHARGER	11
CHARGING BATTERIES	12
BATTERY AND CHARGER	13
MAINTENANCE	14
Motor	14
Horn Button	14
WARRANTY	15
SERVICE RECORD	2

INTRODUCTION

Thank you for choosing Top Gun Mobility for your portable Powerchair transportation needs. Congratulations on your choice of Powerchair, which will provide you with years of dependable service with proper use and care.

It is important to read through this manual before operating your Top Gun Mobility Powerchair to become familiar with its features as well as its limitations and safety information. You will find the operation and care of your Top Gun Mobility Powerchair very simple and easy; however, should you have any questions please don't hesitate to contact your local retailer.

Recommendation

This manual serves as the ultimate guideline for you and your assistant or caretaker who's helping you with operating this powerchair. Read this manual carefully and review it often until you are certain how to handle every operation of this powerchair.

Top Gun Mobility and its affiliates cannot be held responsible for personal injuries or property damage caused by improper handling of the AirLite Powerchair.

Your opinions are very important to us – if you have any comments on the functionality and safety of this powerchair, or the contents of this manual, please feel free to contact with your local retailer, distributor or Top Gun Mobility.

Please note details contained within this User Manual are accurate as at time of print and subject to change without prior notification. Please use due diligence when deciding if this product is right for you.

SAFETY NOTICE









UNPACKING INSPECTION

There are clearly packed accessories in the package, make sure that you understand these parts and they are present. If any part is unclear, contact your nearest Top Gun Mobility retailer.

Package Includes:

- 1 x Powerchair
- 1 x Charger
- 1 x Backrest and cushion
- 1 x Cushion

EXPLANATION OF SYMBOLS

Symbols	Description	note
 WARNING	Hazard identification to cause either personal death or injury.	
 CAUTION	Failure to follow designated procedures can cause either personal injury, Component damage, or malfunction.	
	Mandatory	
	Prohibited	
	Refer to instruction manual/ booklet	
	Warning: hands/fingers pinch exist	
	Type B IEC 60601-1	
	Class II IEC 60601-1	

SAFETY INSTRUCTIONS

Read this user manual carefully before using your powerchair and make sure that you understand these parts and they are all present.

WARNING

- Do not drive on roads with heavy traffic or roads that are muddy, gravelly, bumpy, narrow, snowed over, icy, or canal tow paths not guarded by a fence or hedge.
- Never attempt to physically modify a powerchair including the addition of third-party componentry as changes to powerchairs will render your warranty void and that are likely to affect conformance and risk evaluation.
- Do not suddenly shift off your body gravity as this could make the powerchair unstable.
- Lean forward when climbing and lean back when going downhill, turn the speed control dial to low. Do not drive across a slope t any angle – always drive straight up and down the slope.

Note: When using your powerchair on roads or footpaths, local laws and regulations apply.

GENERAL SAFETY

- **MANDATORY!** This complete user guide should be read fully and understood before using the powerchair.

- Not following the instructions in this manual may result in damage to the powerchair or injuries to the user.
- This powerchair should not be used by anyone suffering from physical or mental limitations that render them incapable of safely handling the powerchair in traffic.
- Never exceed the maximum safe working load.
- Never drive the powerchair under the influence of medication or alcohol.
- If you are taking medication, check with your doctor or physician that your ability to control the powerchair will not be impaired.
- Inspect all electrical connections, all controller connections, the brakes and battery charge to know the feel of your powerchair and its capabilities as pre-ride safety check.
- Designed solely for use by a single person.
- Never attempt to get onto your powerchair without first turning the joystick controller off.
This will prevent the powerchair from moving if accidental joystick control is made.
- Never descend or climb a gradient which is greater than the recommended maximum.
- Never drive across and incline, ramp etc. in any direction.
- Never use the powerchair without the anti-tip wheels correctly fitted.
- Do not use your powerchair on sand, rough terrain, or wet and slippery slopes.

WARNING!

- This powerchair is not intended for use as a seat in a motor vehicle. The powerchair could fail in a vehicle impact, leading to injury of the powerchair occupant or others.
- Do not use the powerchair if it is broken or is not functioning correctly.
- Before leaning or reaching forward, always push your bottom to the back of the chair and face the castors forward.
- Never stand on the footplate, this will cause the powerchair to tip over and injure the user.
- Always place the powerchair on a stable, flat surface before transferring to and from the powerchair.
- The anti-tip wheels are only effective on firm ground. They will sink into soft ground such as grass, mud, or snow if the powerchair rests on them. They will lose their effect and the powerchair could tip over.
- Turning your powerchair to sharply at high speed will cause loss of control and balance and will result in the powerchair tipping over resulting in serious injury or death.

ELECTROMAGNETIC COMPATIBILITY (EMC)

We wish to point out that sources of electromagnetic waves (e.g. cell phones) are liable to create interferences. The electronics of the powerchair itself could affect other electric appliances too. To reduce the effect of electromagnetic sources of interference, please read the following warnings:

- **WARNING:** The powerchair might disturb the operation of devices in its environment that emit electromagnetic field.
- **WARNING:** The driving performance of the powerchair can be influenced by electromagnetic fields (e.g. electricity generators or high-power sources).
- **WARNING:** Avoid using any portable TV or radio in the immediate environment of your powerchair for as long as it is turned on.
- **WARNING:** Check the area for transmitter masts and avoid using the powerchair close to them.
- **WARNING:** If involuntary movements or braking occur, turn off the powerchair as soon as it is safe to do so.

Interfering electromagnetic fields may have a negative effect on the powerchair's electronic systems. These can include:

- Disengagement of the engine brake
- Uncontrollable behavior by the powerchair
- Unintentional steering movements

In the presence of very strong or enduring interfering fields, the electronic systems could even break down entirely or suffer permanent damage.

POSSIBLE SOURCES OF RADIATION INCLUDE:

Portable receiver and transmitter installations (receiver and transmitter with fixed antenna mounted directly on the transmitting unit)

- Transmitting and receiving sets.
- Cell phones or "walkie talkie".
- Portable TV, radio and navigation devices.
- Other personal transmitting devices.
- Mobile medium-range transmitting and receiving devices (e.g. car antennas, with the antenna mounted on the outside of the vehicle).
- Fixed transmitting and receiving sets.
- Fixed mobile transmitting and receiving devices.
- Fixed radio, TV and navigation systems.
- Long-range transmitting and receiving devices.
- Radio and television towers.
- Radio sets.

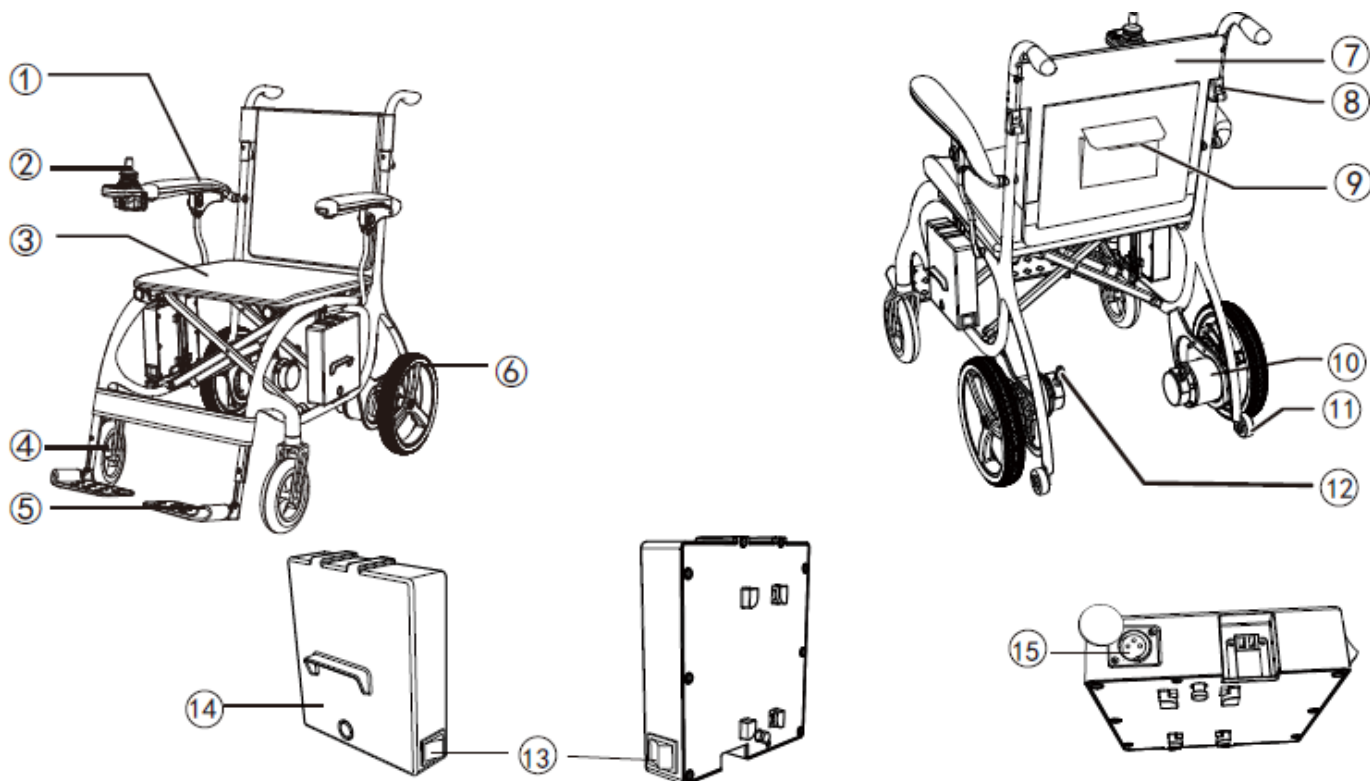
Other home devices like CD players, notebooks, cordless phones, AM/FM radios, electric shavers and hair dryers, so far as we know, will have no influence if they function perfectly, and their cabling is in excellent condition. Please conform to the operating instructions accompanying such electric instruments to ensure trouble-free operating of your powerchair.

1. Do not operate hand-held (transceivers-receivers), such as citizens band (CB) radios, or turn ON personal communication devices, such as cellular phones, while the powered vehicle is turned ON.
 2. Be aware of nearby transmitters, such as radio or TV stations, and try to avoid coming close to them.
 3. If unintended movement or brake release occurs, turn the powered vehicle OFF as soon as it is safe.
 4. Be aware that adding accessories or components, or modifying the powered vehicle, may make it more susceptible to EMI (Note: There is no easy way to evaluate their effect on the overall immunity of the powered vehicle).
-

FEATURES AND SPECIFICATIONS

PRODUCT FEATURES

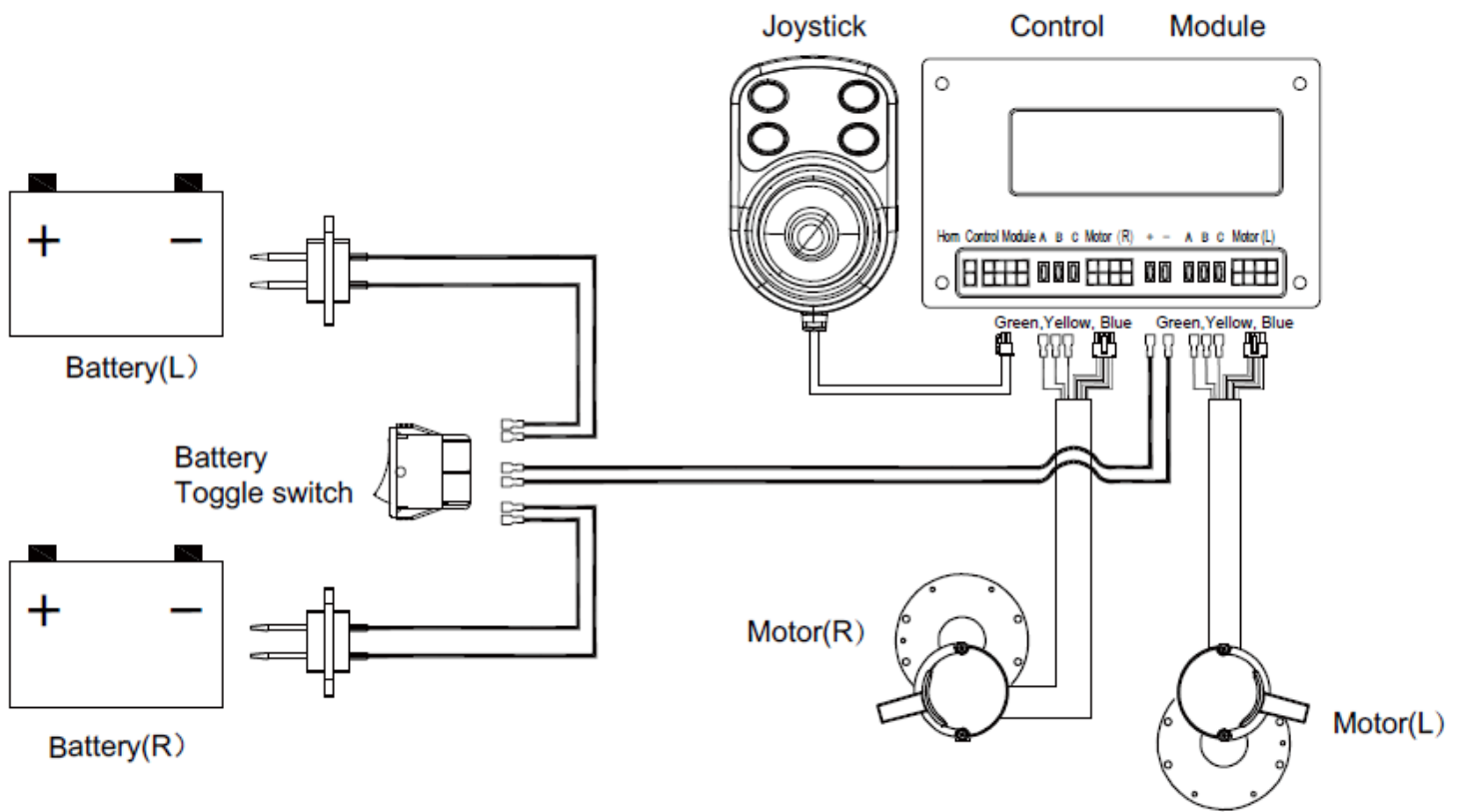
1. This product is composed of the frame, wheels, seat cushion, armrest, lithium battery, motor and controller.
2. Lightweight and compact design. The whole vehicle can be folded, and it can be easily pulled after folding.
3. The handrail can be turned backwards, this makes it easy for the user to move.
4. High performing controller to allow the user to operate flexibly.
5. The battery case can be removed for easy charging.
6. The waterproof grade of this product is IPX4, and the application part of the shock protection degree is type.
7. Ergonomic seat design provides adequate comfort for the passenger.
8. Suitable for indoor use and outdoor use.
9. Frame: Carbon fiber and magnesium alloy.



Name of each part.

- | | |
|--------------------------------|----------------------------------|
| 1. Seat rest | 9. Back storage bag |
| 2. Controller operation handle | 10. Rear axle components |
| 3. Seat | 11. Anti tip wheel |
| 4. Front wheels | 12. Electromagnetic brake switch |
| 5. Footrest | 13. Battery switch |
| 6. Rear wheels | 14. Batteries |
| 7. Backrest | 15. Charging-port |
| 8. Backrest folding button | |

CIRCUIT DIAGRAM



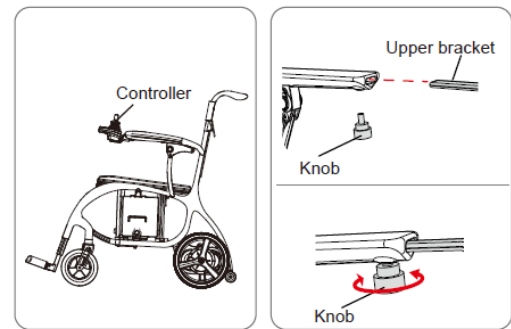
SPECIFICATIONS

SPECIFICATIONS	AIRLITE POWERCHAIR
Weight	12.5kg
Safe Working Load (SWL)	125kg
Frame Material	Carbon Fibre + Magnesium Alloy
Operational Range	Up to 12km
Motor Power	24V 150W
Battery	24V/10Ah Lithium Battery
Charger	29.4V 2A MIC, AC PLUG
Turning Radius	90cm
Tyre Size Front	7" PU Solid Tyre
Tyre Size Rear	10" PU Solid Tyre
Seat (W x D x H)	44 x 42 x 50cm
Seat Cushion Fabric	Mesh Fabric
Maximum Climbing Grade	8° (Subject to user weight & surrounding conditions)
Dimensions (L x W x H)	104 x 58.5 x 90cm
Folded Dimensions (L x W x H)	86.5 x 30 x 76.5cm

ASSEMBLY AND DISASSEMBLY

CONTROLLER INSTALLATION REMOVAL

Insert the upper bracket of the controller into the fixed tube of the armrest as shown in the diagram, and then tighten it with the knob. Operate oppositely if operated with the left hand.



BRAKE

Pull the handle to the open position to put the powerchair in the brake-release position and you can push the powerchair manually. When the handle is pushed to the closed position, the powerchair is in the braking state and cannot be pushed.

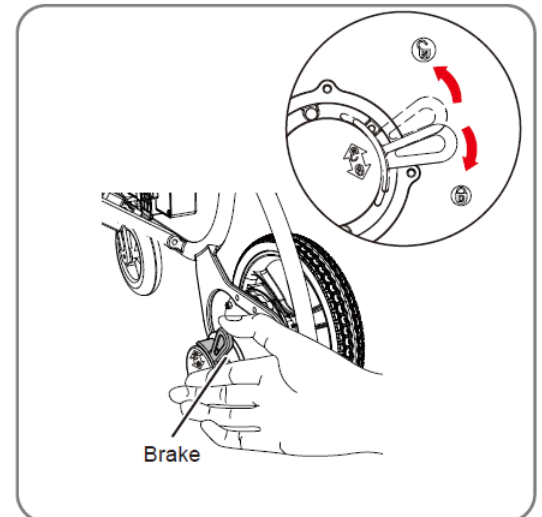
WARNING

The brake must be in the closed state. The powerchair can be started when it is in the braking state.

It is forbidden to use the opening function when the powerchair goes uphill or downhill to ensure safety of the user and the powerchair.

WARNING

1. Turn off the power button on the controller before the brakes are closed and do not sit on the seat while the brakes are open. Do not open the brakes when the powerchair is on a slope or on any sloped position.
2. The brake system is in the open state when the brake is opened.
3. When the brake is opened, the powerchair can only be pushed on the horizontal surface. After that, please put the electromagnetic brake to the closed state.

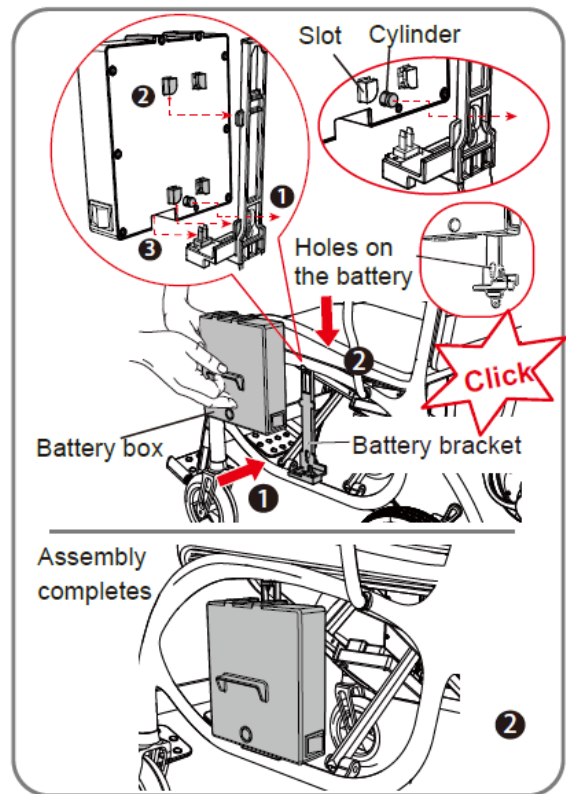


ASSEMBLY OF BATTERY BOX

Attach the battery boxes on both sides of the powerchair. Four slots and a cylinder behind the battery box are requested to align with the holes and fulcrums on the battery bracket and then clamp downwards until a "click" sound is heard and the battery boxes are properly attached.

Attention:

Before the battery assembly, make sure to align the cylinder behind the battery box with the hole in the battery bracket, which can easily get the battery attached in place.



REMOVAL AND REPLACEMENT

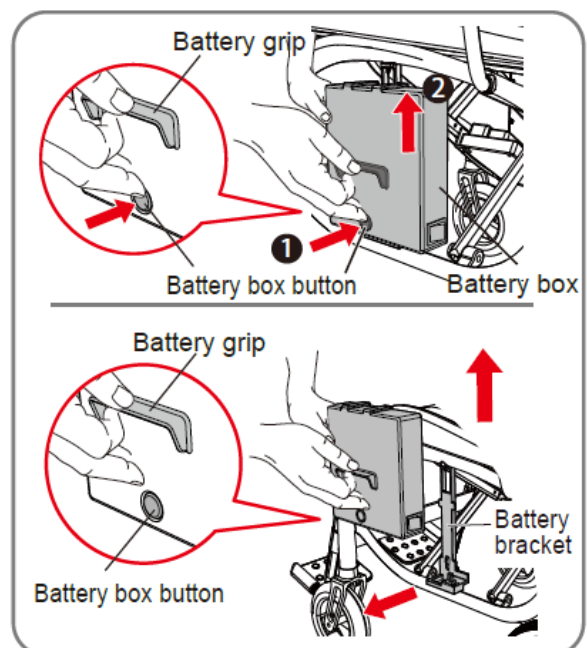
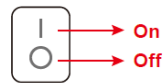
Press down the button on the battery box and lift the battery grip up to remove it.

Attention:

When lifting the battery, you can let your hand that presses the battery box button go.

Attention:

1. Make sure the switch is in the on position, power switches on.
2. Hold the battery box with both hands to prevent it from falling off when assembly and disassembly of the battery box.



BATTERY TOGGLE SWITCH

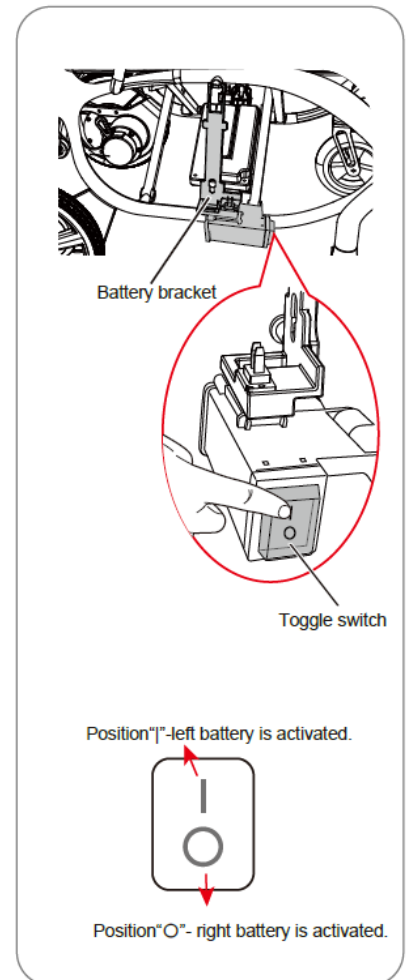
A toggle switch is equipped onto the right battery bracket. Toggle the left and right battery with toggle switch. Position “|” and “O” (see Figure on the right) means the left or right battery is respectively activated.

Note:

Left and Right are determined by user’s forward direction.

Attention:

The joystick must be powered off during the changeover of the left and right batteries.

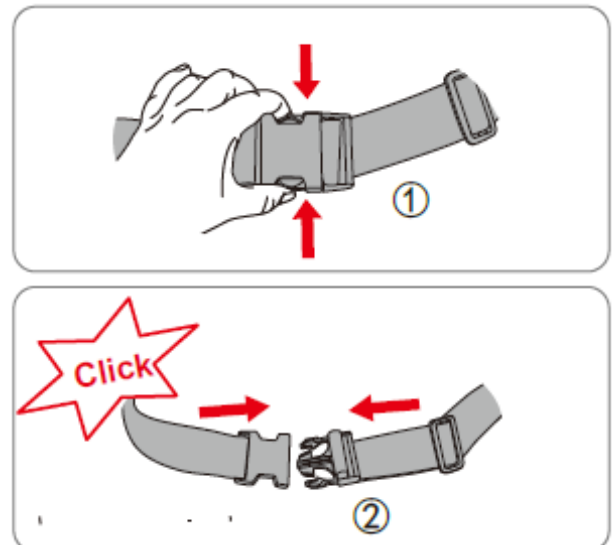


SEAT BELT REMOVAL & INSTALLATION

1. Hold the buckle on the seat belt and press together to unbuckle the seat belt.
2. Align the buckle with the insert, press down until you hear the “click” sound.

WARNING

Please fasten the seat belt when you sit in the powerchair.



ANTI-TIP WHEEL

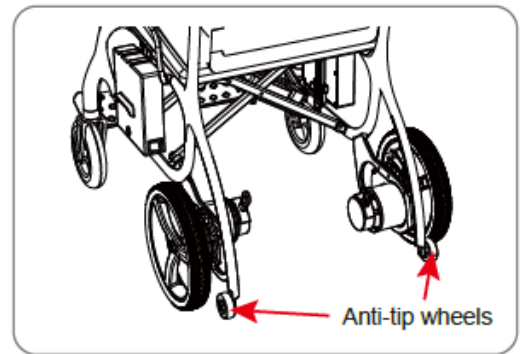
The powerchair is equipped with anti-tip wheels, which are used to prevent the powerchair from tipping over in an emergency. The anti-tip wheels of this powerchair cannot be removed.

WARNING

Do not drive the powerchair after the anti-tip wheels are removed or damaged.

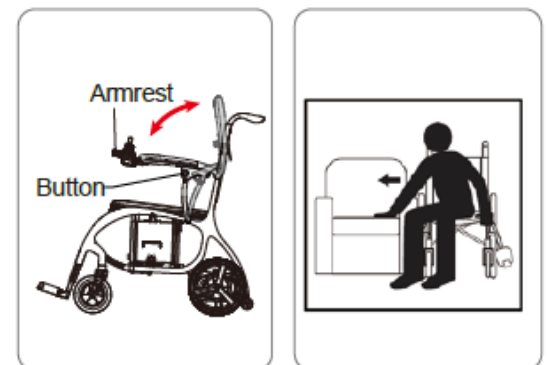
WARNING

Anti-tip wheels are only suitable for hard surfaces. If the road is muddy, the anti-tip wheel may get stuck.



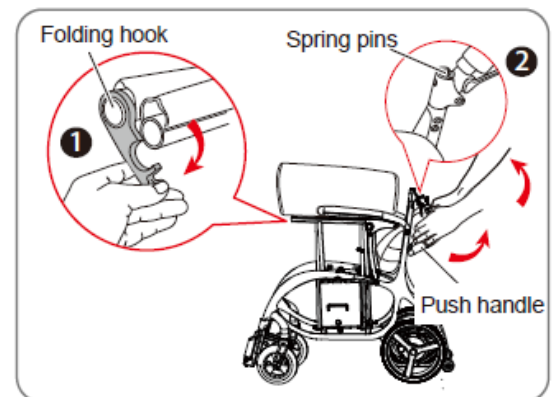
ARMREST LIFTING

- Press the black button on the side.
- The armrest can be lifted or put down, making it easy to get in or out of the powerchair.

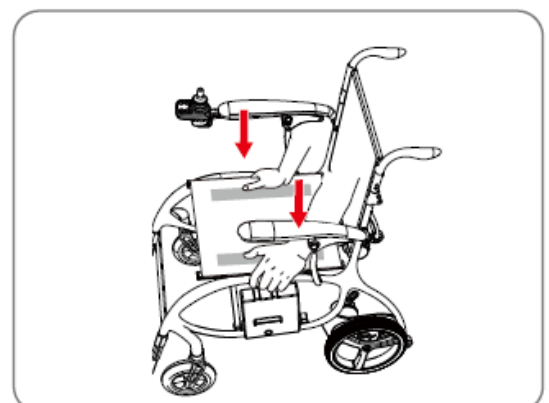


FOLDING/UNFOLDING

Take out the powerchair from its carton, unlock the folding hook as seen in the first figure, then hold the handle as shown on the second figure and lift them up until the spring pins are inserted into the push handle.



Press down the seat crossbars with both hands until the powerchair is completely unfolded.



FOOTREST

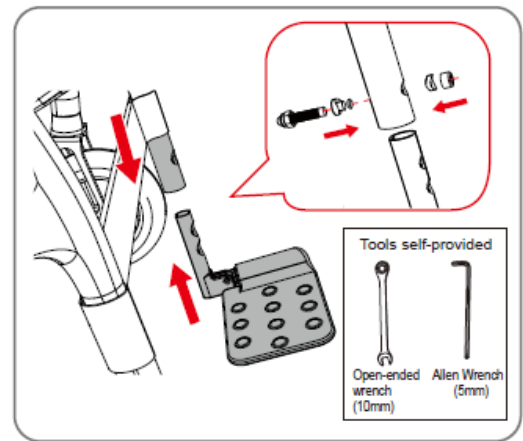
Footrest Height Adjustment

Loosen the screws and nuts with an open-ended wrench and Allen wrench and change the hole to adjust the height (See figure on the right.)

Note:

The footrest has been adjusted to its optimal height before leaving the factory.

Open-ended wrench and Allen wrench are the self-provided tools.

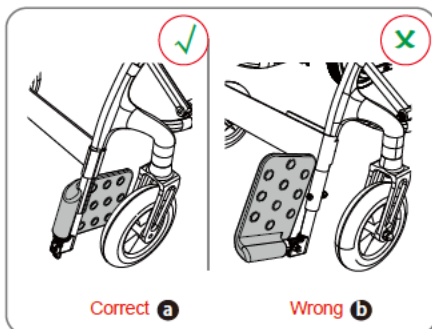


Folding and unfolding the footrest (see Figures on the right.)

Flip up the footrest (see Fig.1), and get it folded inwards as shown on Fig.2 and 3. For unfolding, do the opposite.

Attention:

1. Correct folding (see Fig. a): the footrest must be flipped up first before folding inwards.
2. Wrong folding (see below): the footrest is flipped up directly from left and right side, which cannot be folded inwards.

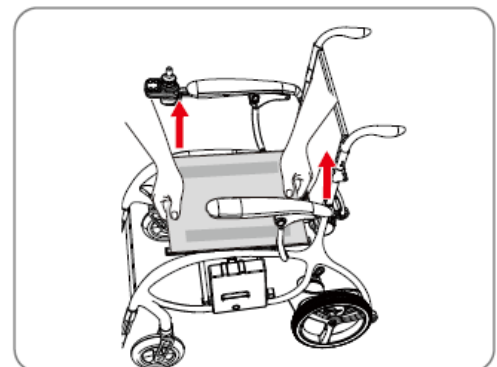
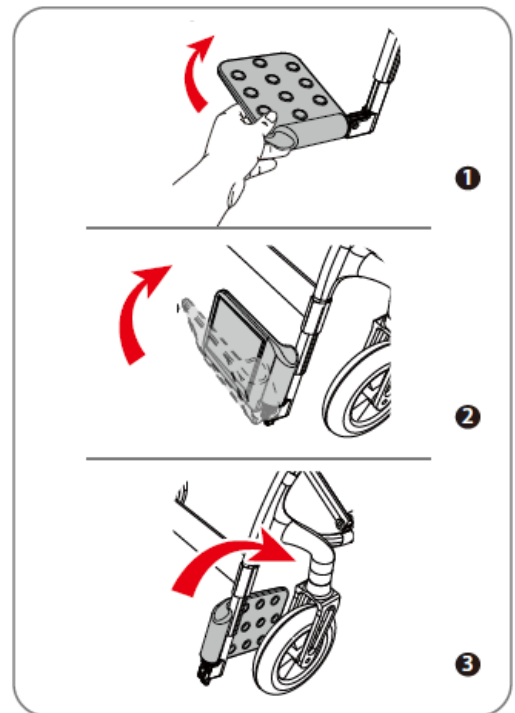


Folding

Footrest folding: Flipping and folding the footrest (See picture.)

Powerchair folding

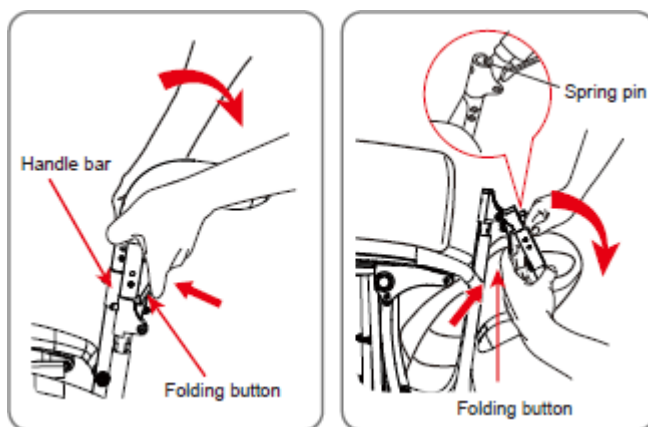
Catching holds the seat upholstery as the right-side picture shown, and pull up it with two hands to make frame close



Hold on both sides of armrests and push inwards at the same time until the powerchair is folded.

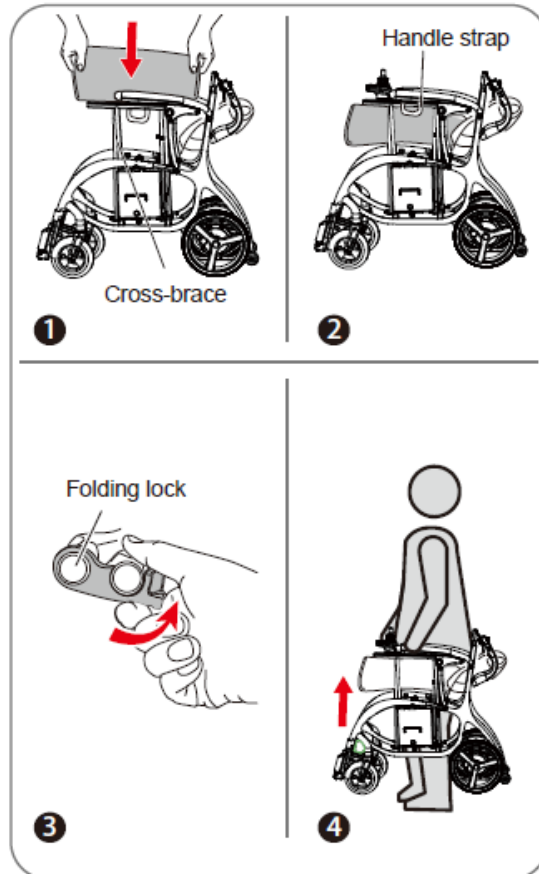


Holding the handlebar and pressing down the folding button, meanwhile, lifting the handlebar slightly until the spring pins detach from the hole on the handlebar sleeve, then fold it down.



PORTABILITY

1. Taking away the cushion and flipping down the seat upholstery while folding the powerchair (Picture 1), then exposing the handle straps (Picture 2) on both sides of seat.
2. Please buckle the folding lock after the powerchair is folded to avoid the frame opening (Picture 3).
3. When you need to carry up with the Powerchair, you can easily lift the whole product with the handle straps (Picture 4).



WARNING

1. Please make sure there are no obstacles around the electric powerchair before opening or folding it.
2. Before opening or folding this product, please pay attention to your fingers, keep your hand away from its mechanical joints to avoid getting hands pinched.
3. Please don't sit on it and drive this electric powerchair when it's in the state of folding or incompletely open.
4. Please make sure the powerchair is fully open before you sit on or drive it.

OPERATION

JOYSTICK CONTROLLER

1. Slow speed button
2. On/off button
3. Battery gauge
4. Speed indicator
5. Horn button
6. High speed button
7. Joystick controller



SLOW SPEED BUTTON: Press to slow the speed.

ON/OFF BUTTON: Press once to turn on the powerchair and press once to turn off the powerchair.

BATTERY GAUGE: Indicates the battery voltage. Green is fully charged; Amber is half full and Red indicates that the battery needs charging.

SPEED INDICATOR: Indicates the speed set by the 'Slow Speed' or 'Increase Speed' buttons.

HORN BUTTON: This button activates a warning horn.

High SPEED BUTTON: Press to increase the speed.

JOYSTICK CONTROLLER: The Joystick controls the direction in which you travel. Push forward to go forward, pull back to go backwards, left to go left and right to go right.

WARNING

Do not turn off the power while driving, as this operation will suddenly make the powerchair stop and tip over.

BEFORE SITTING

- Make sure the battery box switch is in the 'On' position.
- Make sure the freewheel levers are in the 'Drive' position.
- Make sure that the battery is fully charged.
- Secure the seat belt.
- Make sure the powerchair is fully opened and that the seat tubes are located correctly on the side brackets
- Make sure that the Joystick lever is turned off to prevent the powerchair from moving if accidental Joystick contact is made.

STARTING

- Make sure you are seated safely.
- Make sure the footrests are fitted at the correct height for your feet.

STEERING

- The Joystick allows you to steer the powerchair. We recommend that you lower the speed setting to the lowest speed until you have gained experience and practice in maneuvering the powerchair.
- Make sure to maintain sufficient clearance when turning your powerchair so that the rear wheels will be clear of any obstacles.
- Show even greater caution when steering in reverse.

DRIVING ON INCLINES

- When driving your powerchair, never descend or climb a gradient which is greater than recommended.
- Always drive straight up or straight down an incline, ramp, slope etc.
- Never drive across (traverse) an incline, ramp etc., in any direction-Driving across an incline, ramps or other similar obstacles could result in turning the powerchair over resulting in serious injury or death.
- Try and keep the powerchair moving when climbing or descending an incline. If you must stop, restart, and accelerate slowly and carefully.

WARNING!

When driving on slopes the stopping distance of the powerchair can be significantly greater than on level ground.

BATTERY AND CHARGER

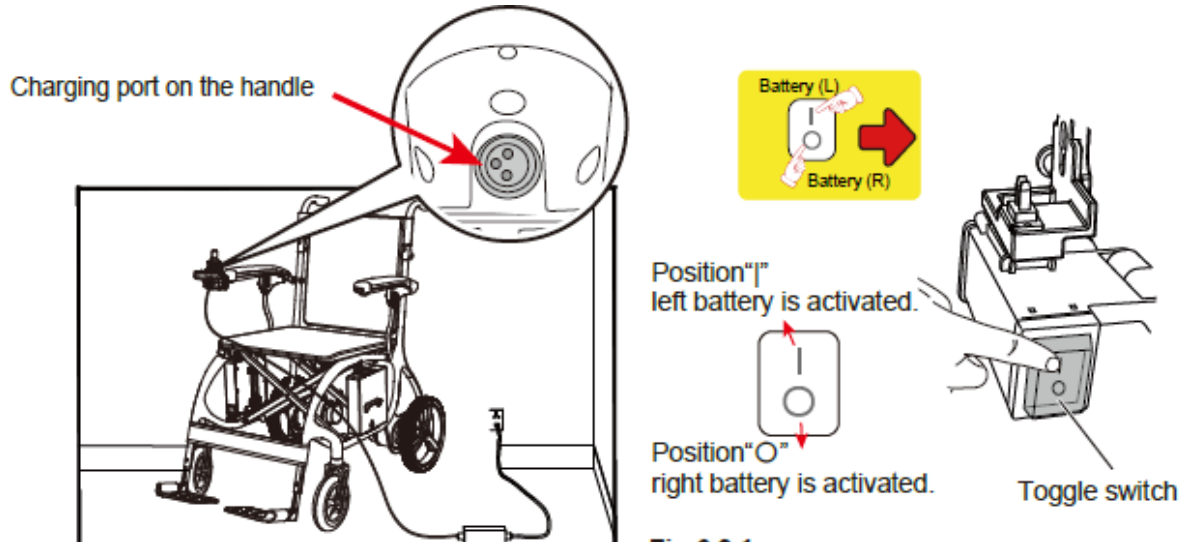
GENERAL INFORMATION & INSTRUCTIONS ON CHARGING

Your powerchair requires a lithium battery that is sealed and maintenance free. The battery is recharged by the supplied off-board charging system.

- Fully charge your powerchair's battery for at least 10 to 12 hours prior to using it for the first time. The new battery will be at its full capacity after having run through approx. 10-20 charging cycles (break-in period). This break-in period is necessary to fully activate the battery for maximum performance and longevity.
 - Keep the battery fully charged to keep your powerchair running smoothly. Charge the battery daily after every discharge even after partly discharge. Depending on the level of discharge, it can take up to 12 hours until the battery is fully charged again.
 - If the battery indicator has reached the red LED range, charge the battery for 16 hours minimum, ignoring the charge complete display!
 - Even if the powerchair is unused for a long period of time, the battery should have a regular charge to make sure that the battery remains fully charged.
 - Do not cycle your battery to a low state of charge without regularly recharging it fully.
 - Do not charge your battery under extreme temperatures. High temperatures above 40°C(104°F) are not recommended for charging as well as low temperatures below 10°C(50°F).
 - Protect your charger from sources of heat such as heaters and direct sunlight. If the battery charger overheats, charging current will be reduced and the charging process delayed.
-

CHARGING BATTERIES

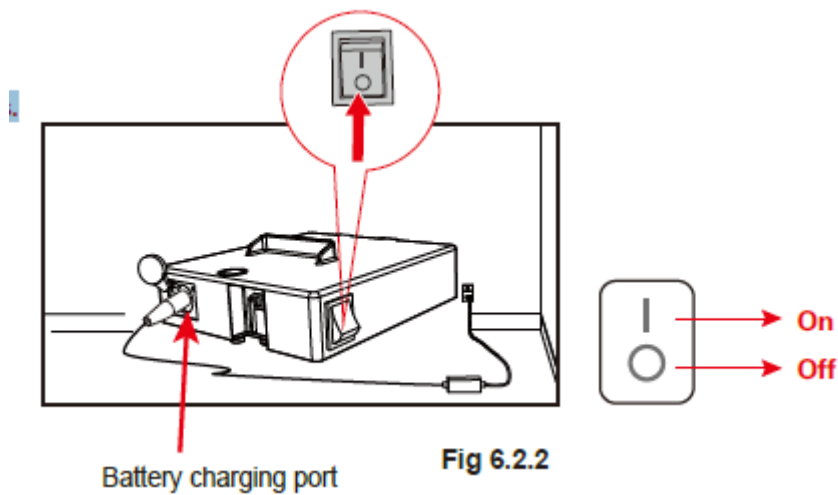
- Make sure you read and understand the battery charger's user manual, if supplied, as well as the safety notes on the charger.
- Turn off the powerchair's power.
- Decide on which charging socket to use -You have a choice of two charging sockets:
 1. Battery Box Socket (allows you to charge batteries 'off board' e.g. in your house).
 2. Controller Charging Socket (saves you having to bend down to plug in charger).



Note: Only one battery can be charged each time. Press "I" on the battery switch to charge the left battery, and "O" to charge the right battery. Left and right is determined by user's forward direction.

Attention:

The joystick must be powered off during the change-over of left and right batteries.



Note: The button on the battery box should be "I" during the charging, i.e. charging with the power on.

BATTERY AND CHARGER

WARNING: Turn on the switch on the battery box prior to charging.

- Plug the charger into the outlet point.
- Do not switch on the battery charger until all the plugs are in position.
- The LED light on the battery charger will show amber while charging.
- The LED light on the battery charger will show green when batteries are fully charged.
- Turn off the main power to the charger before removing the charger plug from the charging outlet.

WARNING! Risk of explosion and destruction of batteries if the wrong battery charger is used. Only ever use the battery charger supplied with your vehicle, or a charger that has been approved by Hi-Fortune.

WARNING! Do not use or store the battery near sources of heat such as a fire or heater.

WARNING! Never attempt to open or disassemble the charger. If the battery charger does not appear to be working correctly, contact your authorized provider.

WARNING! Do not use the battery if it gives off an odor, generates heat or appears abnormal in any way. If the battery is in use or being recharged, remove it from the device or charger immediately and discontinue use.

WARNING! Risk of electric shock and damage to the battery charger if it gets wet.

Always protect the battery charger from water and always charge in a dry environment.

WARNING! Risk of short circuit and electric shock if the battery charger has been damaged. Never use the charger if it has been dropped or damaged.

WARNING! Risk of electric shock and damage to the batteries- Never attempt to recharge the batteries by attaching cables directly to the battery terminals.

WARNING! Risk of fire and electric shock if a damaged extension cable is used. Only ever use an extension cable if it is necessary. If you must use an extension cable, make sure it is in good condition.

WARNING! Risk of injury if using the powerchair during charging. Do not attempt to recharge the batteries and operate the powerchair at the same time. Do not sit in the powerchair while charging the batteries.

WARNING! Chargers are selected precisely for applications and are especially matched to the type, size, and chemical formulation of specific batteries. For the safest and most efficient charging of your powerchair's batteries, we recommend using the charger supplied as original equipment with your product only.

WARNING! Never attempt to disassemble the battery from the battery box or refit the battery. Contact your authorized provider.

WARNING! If your battery charger has not been tested and approved for outdoor use, do not expose it to adverse or extreme weather conditions. If the battery charger is exposed to adverse or extreme weather conditions, then it must be allowed to adjust to the difference in environmental conditions before use indoors. Refer to the manual supplied with the battery charger for more information.

WARNING! Never use or store the battery when it is exposed to high temperatures. Leaving the battery in a car on a hot day or in an area of direct sunlight such as window will reduce battery performance and shorten service life.

MAINTENANCE

Protect your powerchair by having it checked regularly. We strongly advise you to have your powerchair checked at least once a year by a qualified retailer, who will only use the correct spare parts. This periodic inspection will ensure that the powerchair will function perfectly for years. There are a lot of things you can do yourself to keep your powerchair in optimal condition. If you regularly check the powerchair and perform (small) maintenance, this will extend the lifetime and increase the ease of use.

Tyres and Wheels

- Examine tyres periodically for wear and replace them as needed.
- Make sure the wheels can move freely without touching anything. The front wheel and fork should move freely to ensure a smooth ride.

Motor

- Is there any abnormal noise from the motor? Does the electromagnetic brake work properly?

Cross Frame

- Check that the cross frame of the powerchair is in good condition. Make sure the powerchair is easy to fold and unfold.

Battery Gauge

- Does the gauge move to green when switched 'ON'?
- Is the remaining power enough for your trip?

Horn Button

- Is it working correctly?

Upholstery

- Check the textile for holes, cracks and worn spots.
- Check the upholstery-mounting grommets to make sure that they are all correctly aligned and secure.

Cleaning

- Clean the upholstery, chassis, plastic components, and non-electric parts of the powerchair regularly with a either dry or moist cloth.
- Do not use water, oil or other chemical solutions to clean your powerchair. Be sure NOT to spray the powerchair with water as this can damage the electronic components. Please clean the powerchair by wiping it with either a dry or moist cloth.
- Please take the powerchair to an authorized retailer for repairs and adjustments. Improper adjustments could lead to accidents and powerchair malfunction.

Unique Identification Number

- Your powerchair has a unique identification number which is located at several different locations on the chassis and the battery box. This unique number will enable your authorized supplier to confirm with Hi-fortune, if necessary, the age of your powerchair and when it was purchased.

END OF USE

Your product should be disposed of separately from household waste according to the local law and regulations. At the end of the powerchair life, take it to the designated recycling place. Sorting and recycling will help conserve natural resources, and ensure they are recycled in an environmentally friendly way.

Recycling of each part should be handled by a designated authorized recycling organization in accordance with local laws and regulations. As for plastic parts, frame and pipe parts, they can be handed over to professional recycling units for disposal after the end of use.

WARRANTY

Consumer Limited Warranty

Top Gun Mobility has provided information throughout the owner's manual regarding proper usage and care of your Powerchair. Failure to adhere to this information will void the warranty of the Powerchair, its parts and the batteries supplied by Top Gun Mobility.



The following warranty is granted only to the INITIAL Consumer who has purchased our product and commences on the Date of Purchase by the Consumer from an Authorized Top Gun Mobility' Provider. The Consumer must have proof of purchase from Top Gun Mobility or the authorised Powerchair provider to receive service. *Note: Your selling retailer is responsible for the repairs, and should you not be able to return the product to the selling retailer or another Top Gun Mobility Retailer, you may be liable for any labour charges, parts will be supplied free of charge. You will be liable for all labour and parts costs should the repairs not be covered under warranty.*

The warranty covers the following Powerchair models:

"Airlite Powerchair"

5 Year Warranty:

From the date of purchase from an authorized Top Gun Mobility' retailer, in the event of defective materials or workmanship, Top Gun Mobility will repair or replace at our option any of the following structural frame components found to be defective by an authorized Top Gun Mobility representative.

- Structural Frame Components, including fork, seat post, and frame welds.
- Motor.

Two Year Warranty

Your Top Gun Mobility powerchair is fully guaranteed for two years from the date of your purchase against faults arising due to defects in manufacture or materials. This warranty does not detract from but is in addition to your legal rights.

All electronic parts, including controllers, batteries, brakes, and battery charges, have one year warranty. Servicing to the controller, batteries or battery charger must be carried out by your authorised Top Gun Mobility provider. Any attempt to open or dismantle these items renders the guarantee void on that item.

Not Covered Under Warranty

The guarantee does not extend to those items which may need replacement due to normal wear and tear (tyres, belts, bulbs, upholstery, plastic shrouds, motor brushes, fuses, and batteries), or damage to the product caused by misuse or accident for which Top Gun Mobility or its agent cannot be held responsible.

Note: An increase in operating noise DOES NOT constitute a defect. With normal wear and tear, operating noise is expected to increase.

Note: While charging batteries, it is normal for the battery charger to heat up. Heat coming from the battery charger does not constitute a defect.

Transport/Call Out costs

As the owner you must bear the cost of transporting the unit to the retailer or should you decide to have the retailer come to you, you must bear the cost of the retailers call out fee. Your retailer may choose to waive this cost, but this will be at the retailer's discretion only and separate to Top Gun Mobility's warranty terms and conditions.

Warranty Service Period:

The service intervals are every 500klm or every twelve (12) months from date of purchase, whichever occurs first. We recommend using a Top Gun Mobility Service Provider. Proof of annual service (paid invoice receipts) must be kept and provided upon any warranty claim. This warranty will be void if annual servicing is not carried out.

Service Checks and Warranty Service:

Warranty service can be performed by an authorised Top Gun Mobility Provider / Local Mobility Powerchair Technician. Please contact your authorised Top Gun Mobility Retailer for advice on the current cost affecting the service visit. Top Gun Mobility reserves the right to replace warranted part(s) with refurbished or new part(s) at our discretion. All labour charges, service calls, transportation costs or any other charge(s) associated with the installation of any warranted part(s) are the responsibility of the consumer. Warranty is for the replacement of the parts only and does not include freight for the replacement parts. Consumers are not to return any item(s) to Top Gun Mobility without prior written authorization. Any damages incurred while warranted part(s) are in transport are the sole responsibility of the consumer.

Commercial Use:

Any Top Gun Mobility products used in a commercial application will only be covered by a 12-month warranty from the purchase date and will be excluded from any coverage mentioned in the warranty relating to 5 (five); 3 (three) or 2(two) year warranty. All other conditions in this warranty will apply.

There is no other express warranty.

Implied warranties including those of merchantability and fitness for a particular purpose are excluded. Liabilities for consequential damages are excluded. This warranty gives you specific rights and you may also have other rights which may vary from state to state.

SERVICE RECORD

Certification, by signature and stamp, of an Authorised Top Gun Mobility retailer/repairer is required to verify that the recommended routine maintenance has been performed on this Mobility Powerchair. An accurate record is necessary to protect your warranty.

Always present this book to the retailer when routine maintenance is performed or when warranty repairs are requested. Service intervals are required as per Maintenance Schedule section of this User Manual.



Technical Service, please scan the following QR code.



Copyright Top Gun Mobility

User Manual & Warranty Booklet 2023
