

Deluxe Fabric Dual Motor Lift Recline Chair



- Style and design combined with form and functionality.
- Up market upholstery combined with quality components.
- This quality therapeutic chair offers a high level of comfort for the user.
- Suitable for people requiring a comfortable relaxation or therapeutic chair.
- Covered with high grade quality fabrics.
- For use in hospitals, age care centres and suitable for domestic use.
- Features include lifting the patient into a standing position and vice versa, the chair also reclines into a semi-bed position for comfortable day naps.

Patient Lift Position



Chair lifts into an upright position, making standing for the patient easier



- Backrest
 - independently reclinable
 - reclines to a semi-bed position
 - easily removable

- 3 stage controller
 - easy to use
 - controls each chair function separately or in unison

- Seat
 - plush padded seating

- Armrests
 - wide arms
 - soft padding

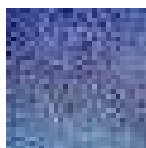
- Legrest
 - elevating legrest
 - controlled independently

Lift Chair Recline Position



Reclining function converts the chair into a semi-bed position

overall height	overall length	overall width	seat depth	seat width	seat height	armrest height	unit weight	weight capacity
110cm	94cm	86cm	55cm	51cm	51cm	65cm	60kg	160kg



Quality
Grey Fabric
Upholstery

Hand Controller

